

## Configuration Settings in Integrated Training

Modifying the Earth Model, Scan Volume, and Path Loss values in Emission Modeling, greatly effects how emissions are represented at the AN/SLQ-32A. The recommended values for each of these settings are indicated below, and use of these settings will present a more realistic tactical picture during scenario playback to the AN/SLQ-32 Operator.

**Earth Model** – Four-Third Earth (This model reflects the curvature of the earth and will enable the AN/SLQ-32A to intercept emissions at realistic distances vice Flat Earth.)

**Scan Volume** – Conical (This model reflects the actual scan of an emission, utilizing the Isotropic setting discounts the scan volumes of emissions and will represent all emissions as Omni-Directional.)

**Path Loss** – Path Loss On (This model reflects the Free Space Path Loss of an emission. Using the Off setting will result in the emission audio remaining at a constant no matter the distance from Ownship.)

To set the Emission Modeling Configuration settings in BTSE, select **File/Configurations/Modeling**. Figure 1 below will appear and allow changes to be made to the configuration settings.

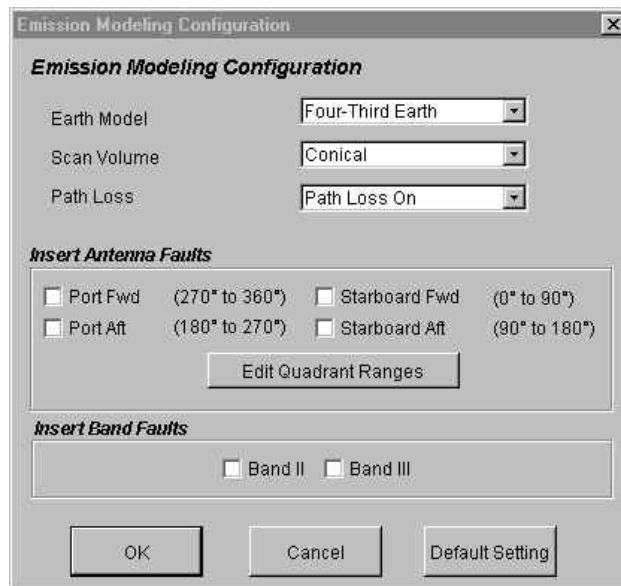


Figure 1: Emission Modeling Configuration window.